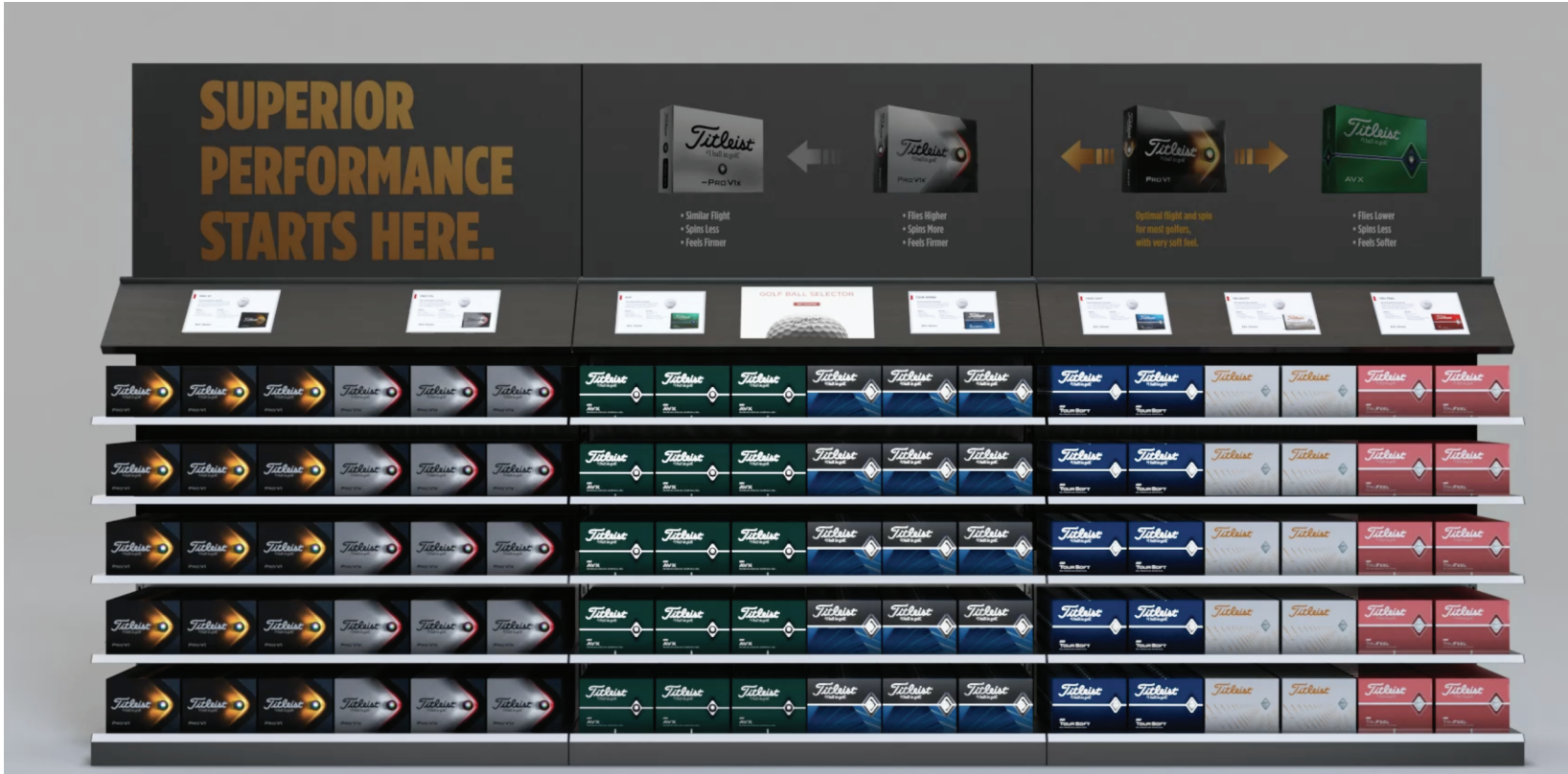


**Please contact your local
Titleist Representative before
discarding this display.**

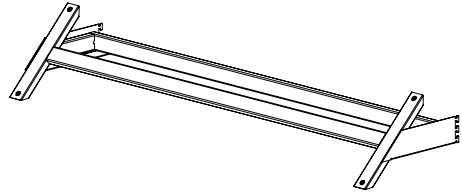


INSTALLATION GUIDE | 11.2022

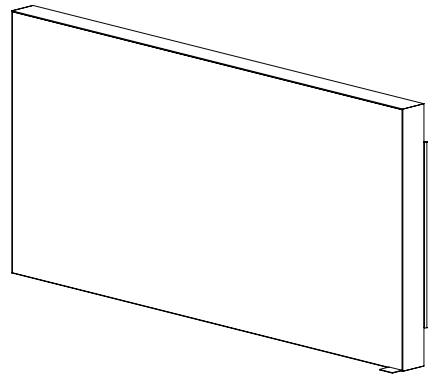
PR19000975 PGATS-DYNAMIC LIGHTBOXES WITH TOUCHSCREEN

INFORMATION

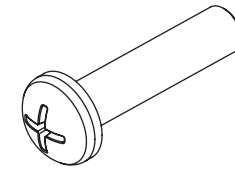
Installation package



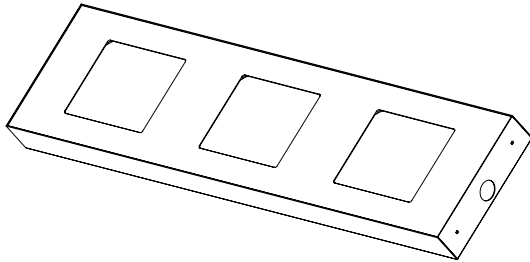
SUPPORT BRACKET (x3)



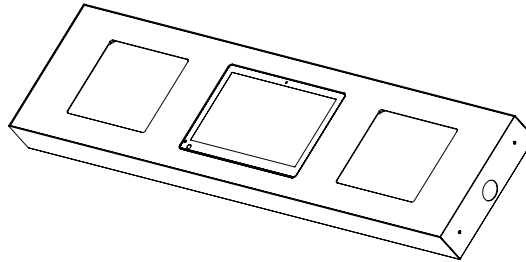
LIGHT BOX (x3)



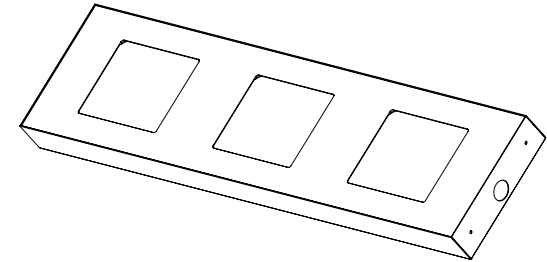
M6x12MM (x12)



LEFT SIDE WORKBOX (x1)



MIDDLE WORKBOX (x1)



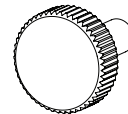
RIGHT SIDE WORKBOX (x1)



INNER HEXAGON SPANNER
FOR M5 SCREWS (x1)



WINGNUT (x4)



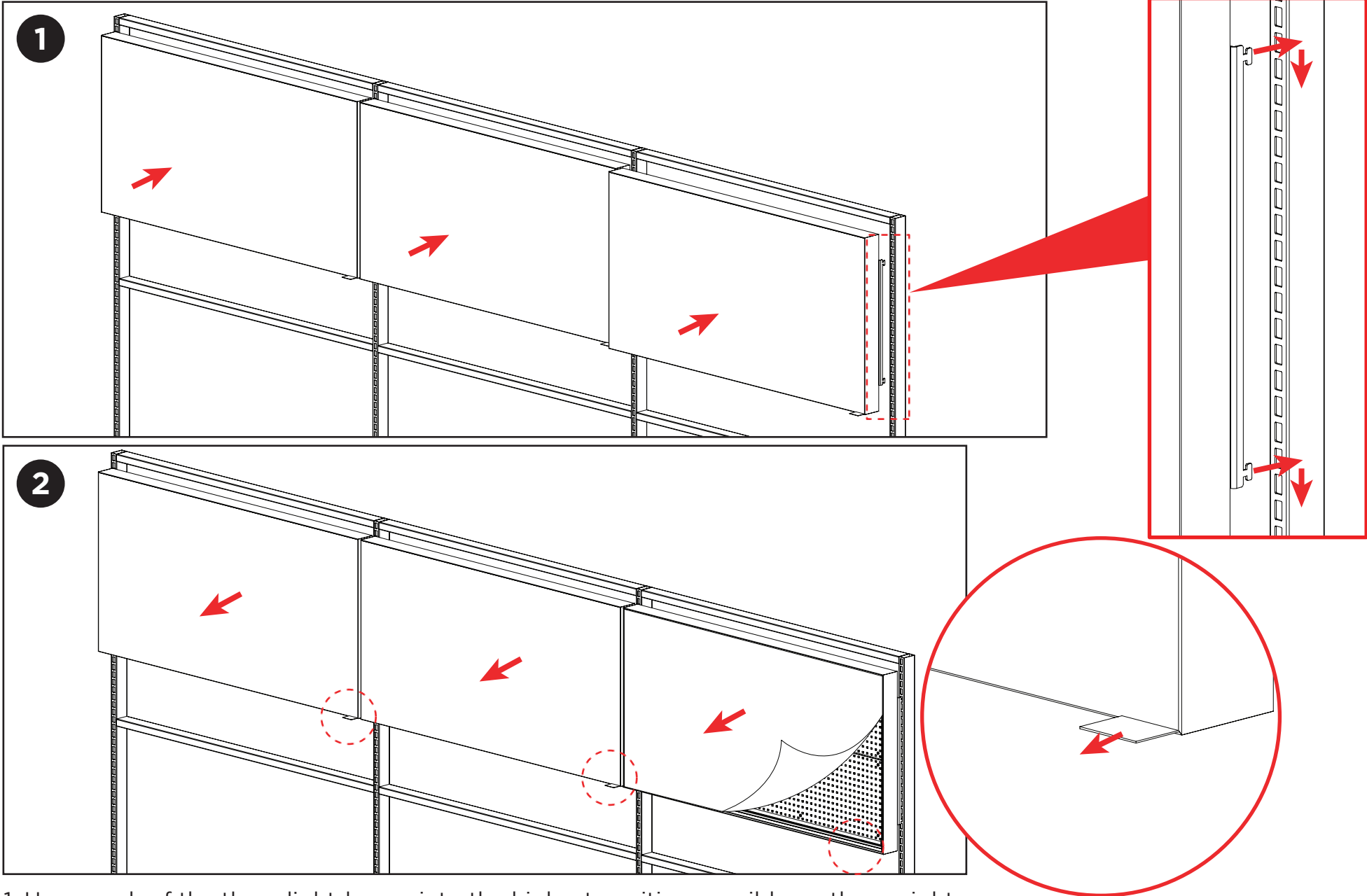
THUMB SCREW (x4)



USB FLASH DRIVE (x1)

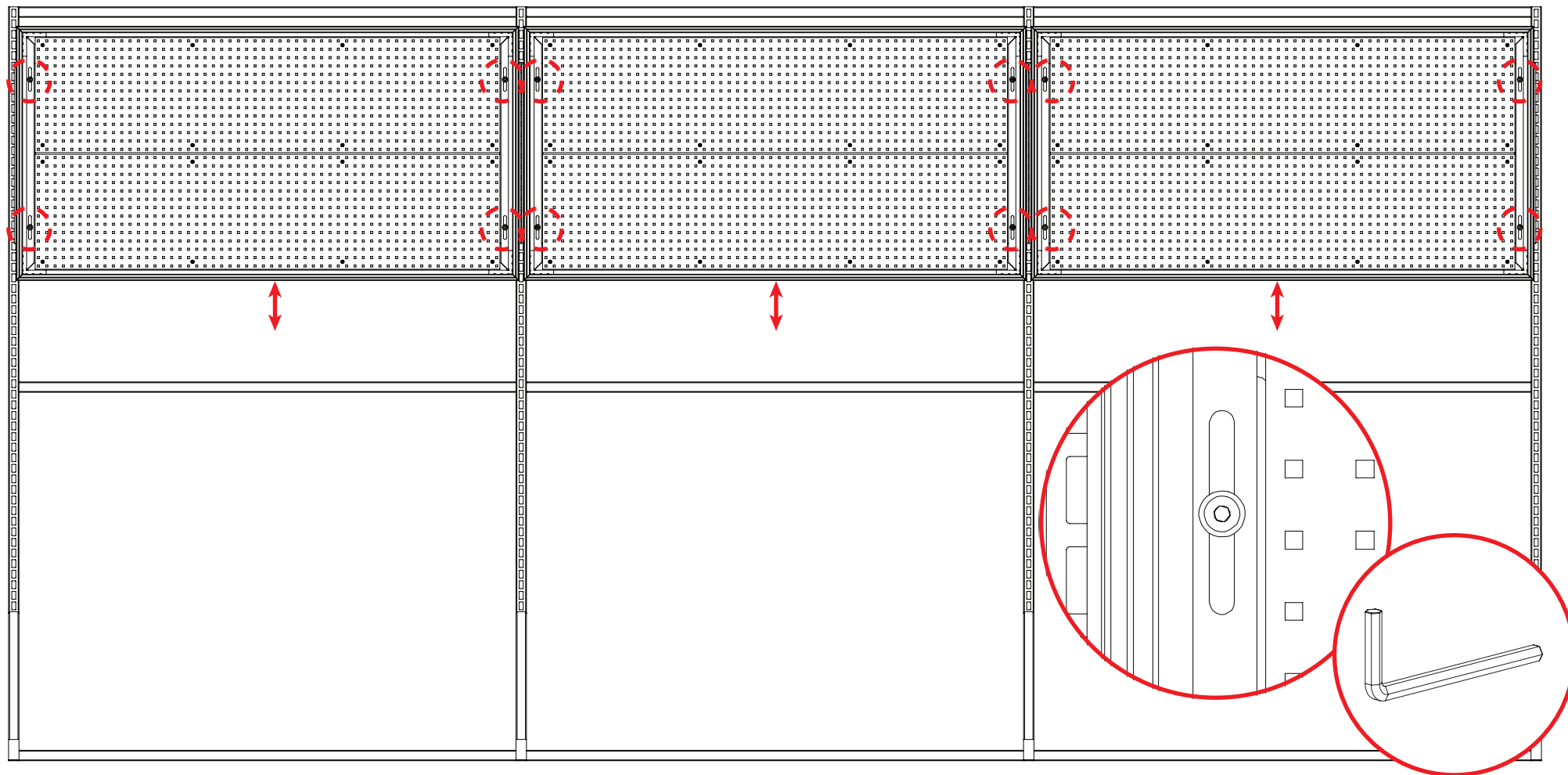
Installation Instructions

Titleist[®]

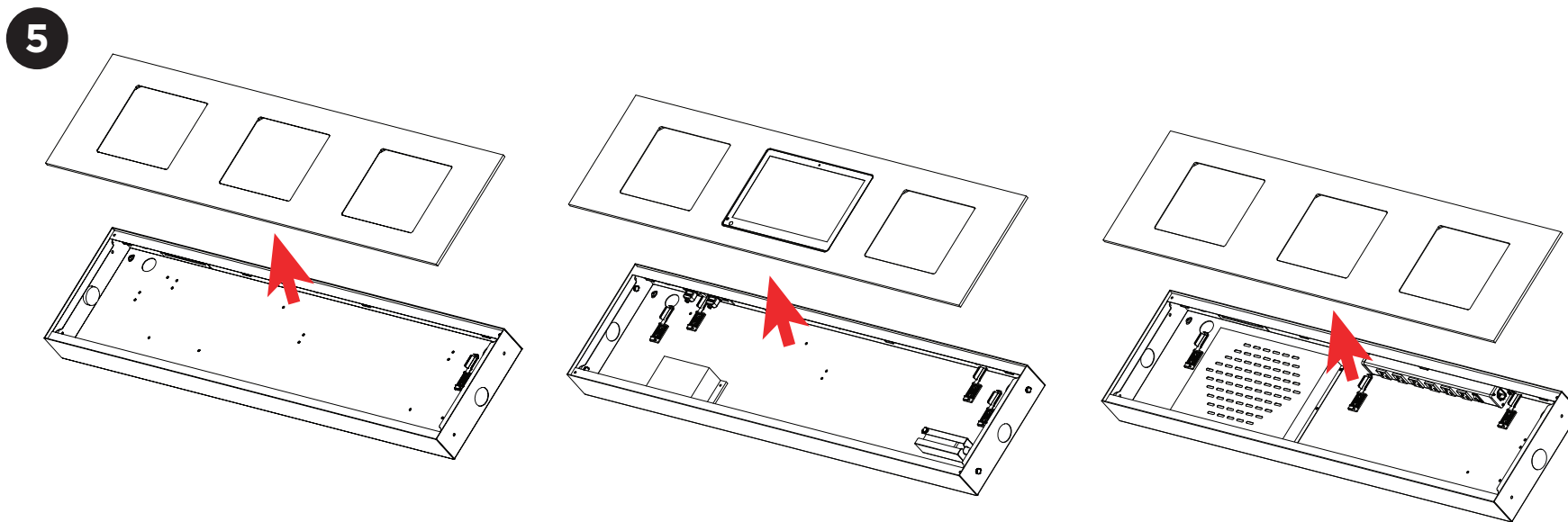
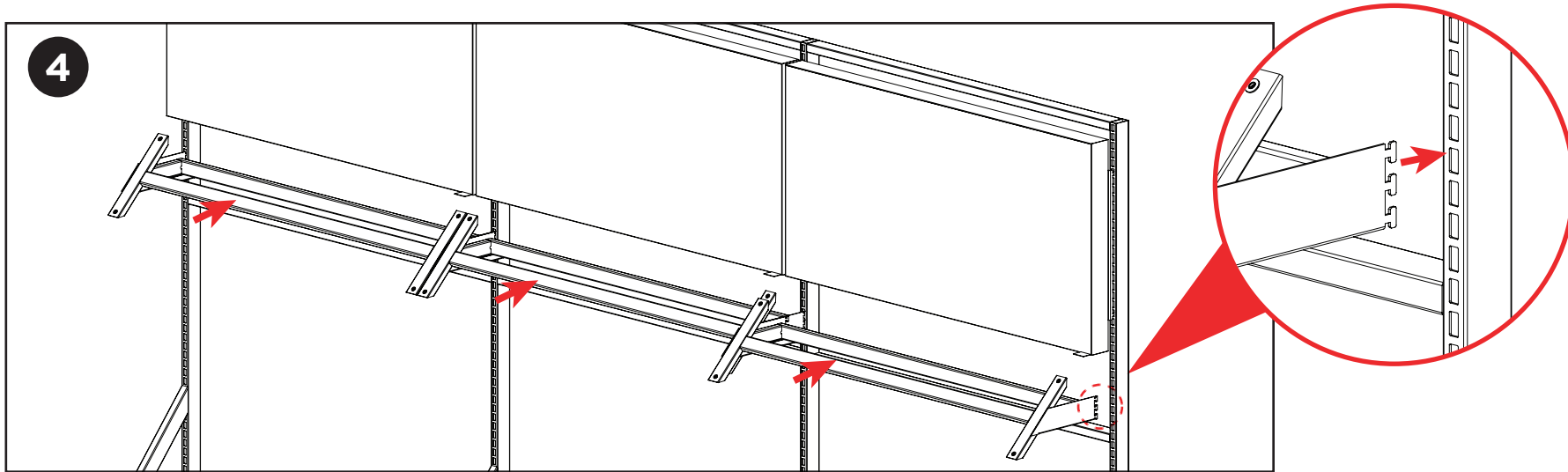


1. Hang each of the three light-boxes into the highest position possible on the uprights, make sure hooks are fully engaged into the slots in the uprights.
2. Remove the fabric graphic and carefully set aside.

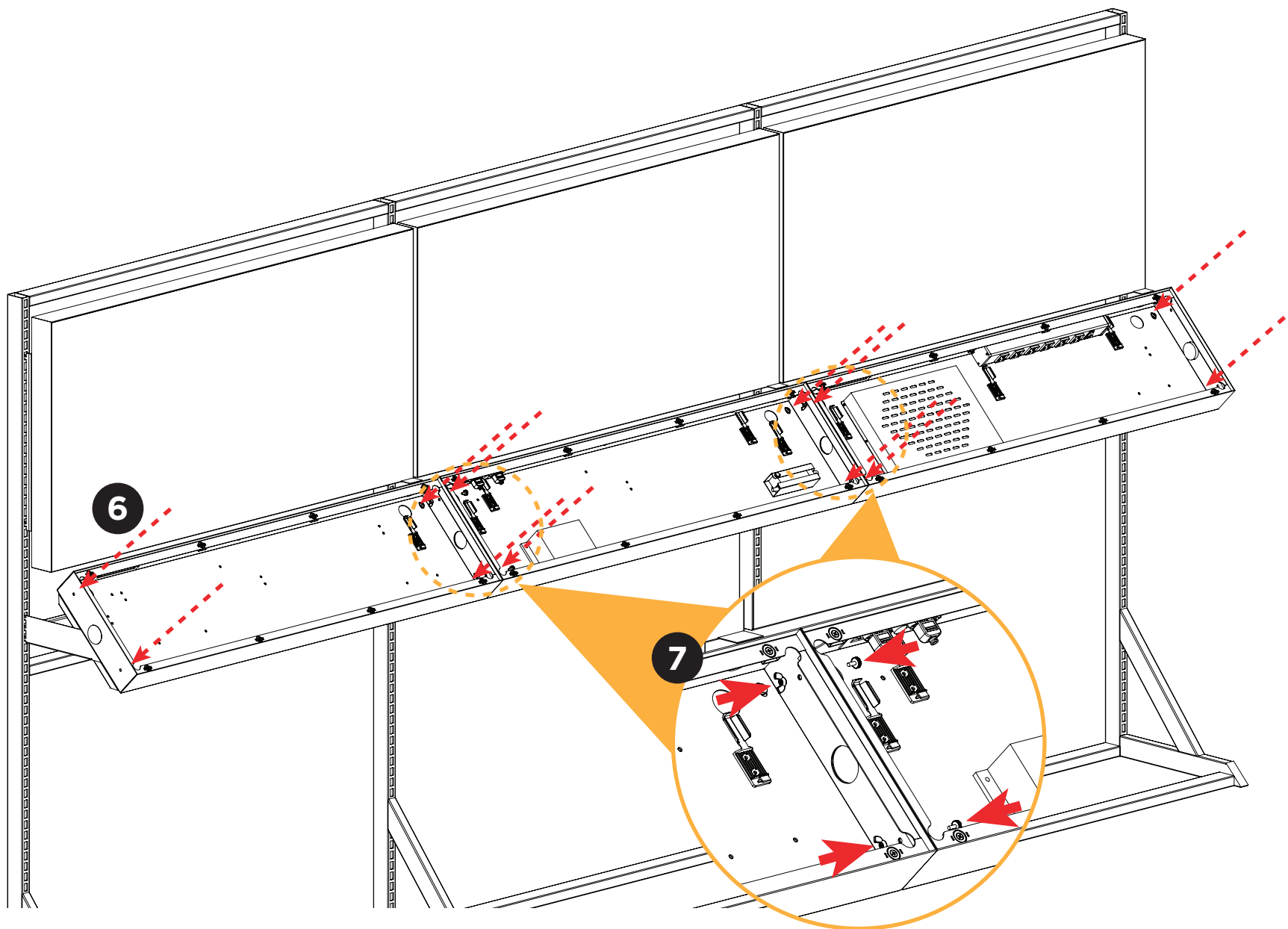
3



3. Loosen the attachment bracket screws with supplied Allen wrench and align light-boxes to top of gondola - once in position tighten down bracket screws.

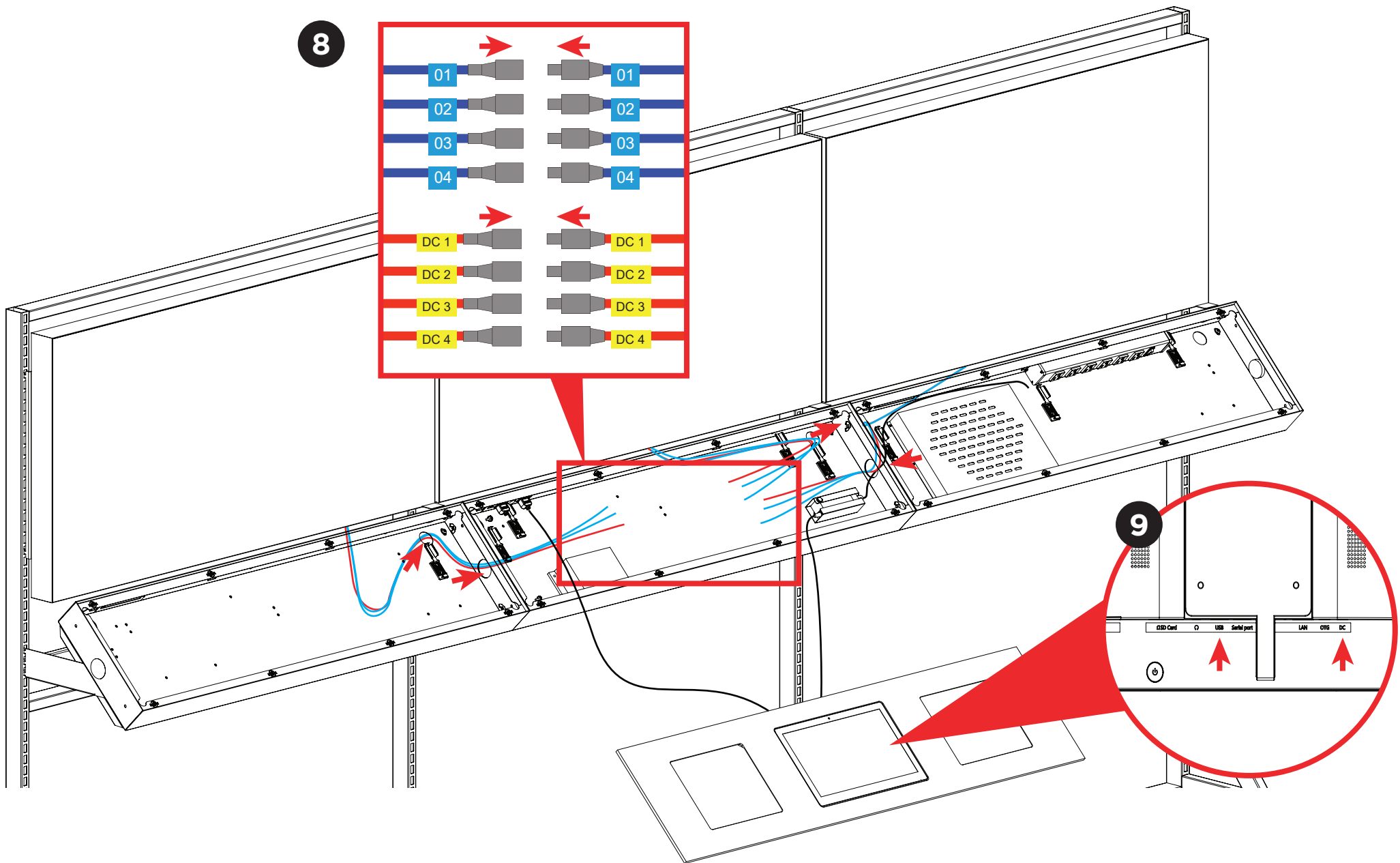


4. Hang each of the three support brackets, making sure hooks are fully engaged into the slots in the uprights.
5. Remove the front panels of work boxes by pushing from behind (panels are held in magnetically)

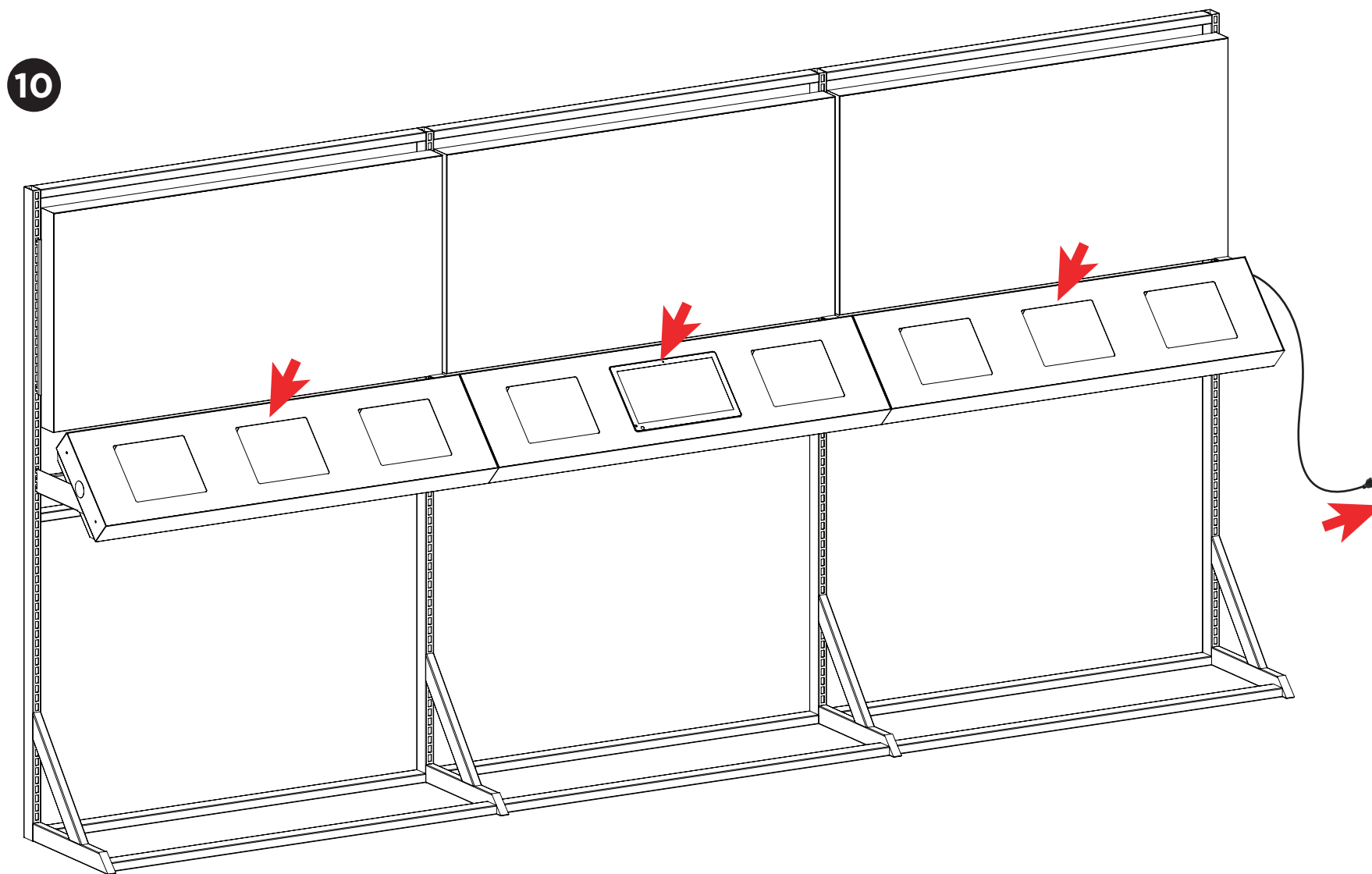


6.Attached the workboxes onto the support brackets, fixing them with M6x12 screws supplied.

7.Secure the workboxes to each other with thumb screw and wingnuts supplied between the workboxes.



- 8. Feed cables from light-boxes into workboxes and connect corresponding numbers and colors
- 9. Plug "DC for tablet" cable into Tablet DC port, plug "USB for tablet" into tablet USB port.

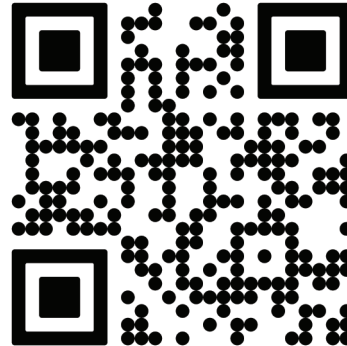


10. Replace the workboard front panels and connect to power outlet and switch on power.

Installation is completed.

IMPORTANT

Once the installation is complete please scan the QR code below or on the display to register this display



HOW TO USE USB FLASH DRIVE TO UPDATE ANIMATION SEQUENCE OF DYNAMIC LIGHTBOX

1. Extract the compressed files.
2. Format the USB flash drive.
3. Decompress the LDX file and copy to USB flash drive.
4. Keeping the light-box powered on, plug the USB flash drive into main USB port, - the light-box will go out.
5. Remove the USB flash drive after seeing the animation start running through.
6. Cycle power by unplugging the power, wait 3 minutes and re-connect power.

Update is complete.

WIRING DIAGRAM

